

Who is part of an Individualized Education Program Team?



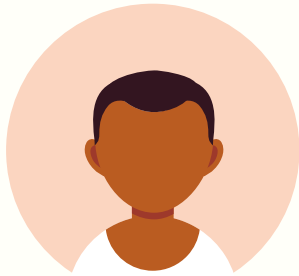
Family:
Experts on their child's history, culture, what they are good at and their needs



Special Education Teacher:
Shares about how supports are being provided to help meet the goals and progress toward goals



General Education Teacher:
Shares about the classroom curriculum and support for individualizing the curriculum

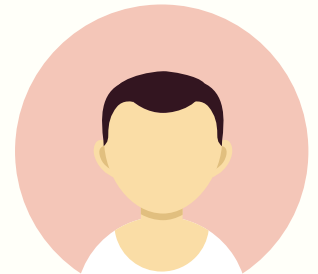


Sometimes related service providers who offer physical, occupational, speech, or behavioral therapy

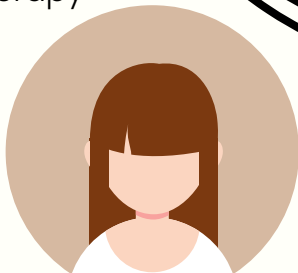


Student

Shares about what they want to achieve, what they like, what helps them, etc.



Testing expert:
School psychologist or others who interpret and explain evaluation results



School administrator or representative of the school system:

Shares information about school resources and has the authority to commit to resources and make sure services are provided as they are described in the IEP



Others might include:
school nurse, interpreter, person invited by family